

# Evidence of Performance

## Thermal transmittance



### Test Report

No. 13-002647-PR04

(PB 02-K20-06-en-01)

**Client** Winsa-Ege Profil Tic. San. A.S.  
Atatürk Org. Sanayi Bölgesi  
10003 Sokak No: 5  
35620 Cigli/Izmir  
Turkey

#### Basis \*)

EN 14351-1:2006+A1:2010-03

Test specification:

EN 12412-2:2003-07

\*) and corresponding national versions (e.g. DIN EN)

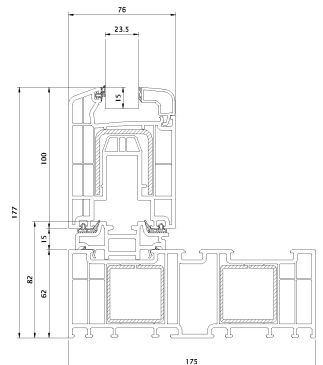
**Product** Plastic frame profile of a sliding door:  
Profile combination: Casement - Frame

Designation System: Panorama HS76

Relevant performance product details Material PVC-U rigid; Face width B in mm 177; Frame member Profile cross section, width in mm 82; depth in mm 175; Reinforcement; Material Steel - metallic surface; Casement member Profile cross section, width in mm 100; depth in mm 76; Reinforcement; Material Steel - metallic surface; Replacement panel; Edge cover in mm 15; Thickness in mm 24

Special features --

#### Representation



#### Result

Thermal transmittance



$$U_f = 1,2 \text{ W}/(\text{m}^2\text{K})$$

#### Instructions for use

The results obtained can be used by the manufacturer as Declaration of Performance in accordance with the Construction Products Regulation 305/2011/EU. The provisions of the applicable product standard have to be observed.

ift Rosenheim

23.01.2014

#### Validity

The data and results given refer solely to the described and tested specimen.

Konrad Huber, Dipl.-Ing. (FH)  
Head of Testing Department  
Building Physics

Sebastian Unterholzner, Dipl.-Ing. (FH)  
Operating Testing Officer  
Thermal & Climate

#### Notes on publication

The ift-Guidance Sheet "Conditions and Guidance for the Use of ift Test Documents" applies. The cover sheet can be used as abstract.

#### Contents

The report contains a total of 5 pages and annex (1 page).